

PROGRAM (Finalized Version)

	DAY 1 (April 15th, 2017)	DAY 2 (April 16th, 2017)
Registration 8:30-16:00 (Days 1-2)	8:45-10:30 Sessions A1, B1	8:45-10:30 Sessions A2, B2, C2
	8:45-10:15 Session C1	
	10:30-10:50 Opening Address* & Tea reception	10:30-10:45 Tea break (Boardroom)
	10:50-12:00 Sessions D1, E1+Poster, F1	10:45-12:00 Sessions D2, E2+Poster, F2
	12:00-13:00 Lunch (Curve Restaurant on G/F)	12:00-13:00 Lunch (Curve Restaurant on G/F)
	13:00-15:00 Sessions G1, H1, J1	13:00-15:00 Sessions G2, H2, J2
	15:00-15:15 Tea break (Boardroom)	15:00-15:15 Tea break (Boardroom)
	15:15-16:45 Sessions K1, L1, M1	15:15-16:45 Sessions K2, L2, M2

* **Opening Address:** Associate Professor Dr. Tanida Phatisena, Director of Research and Development Institute, Nakhon Ratchasima Rajabhat University, Thailand (**venue: Inner Space, 1/F**).

Session A1: ECONOMIC, SOCIAL & CULTURAL DEVELOPMENT (venue: Galaxy Room, 1/F)

Chair: Zeenat Ismail (Institute of Business Administration Karachi)

Creative Economy Factors Affecting Thailand's Long-term Strategies for Entering the ASEAN Economic Community (AEC) (a17-043)

Speaker: Mongkon Donkwa (Khon Kaen University)

Even Democratic Socialism Generates Inefficiency – A Lab Experiment (a17-037)

Speaker: Ayukonchong Agborndip (University of Erfurt)

Self-reliance of Homeless People (a17-342)

Speaker: Korn Sariya (Mahachulalongkornrajavidyalaya University)

Deployment of Cloud in Blended Learning Environment to Enhance Academic Quality: An Indian Perspective (a17-093)

Speaker: Inderbir Kaur (GSSDGS, Khalsa College, India)

The Role of Women in Economic Development - Evidence and Policy Recommendations (a17-014)

Speaker: Lillian Kamal (University of Hartford)

A Comparison Between the Same-Ethnicity and Cross-Ethnicity Friendship Quality of Early Adults in Karachi (a17-031)

Speaker: Zeenat Ismail (Institute of Business Administration Karachi)

Session B1: SOCIAL, CULTURAL & REGIONAL DEVELOPMENT (venue: Outer Space, 1/F)

Chair: Waraporn Tachasuwan (Royal Police Cadet Academy)

Rural Women's Participation in Regeneration of Lurik Weavers at Tlingsing Village, Klaten Regency (a17-157)

Speaker: Sarah Rum Handayani Pinta (Universitas Sebelas Maret)

Role of Community Leaders on Sharing Local Knowledge of Silk Making in Thai Communities (a17-333)

Speaker: Suchada Namjaidee (Nakhon Ratchasima Rajabhat University)

Study Catalyzing Fenton Reaction for Dye Disposal from Pakthongchai's Silk Village Using Uncoated-pottery Scraps from Dankwian's Pottery Village, Thailand (a17-325)

Speaker: Somphinit Muangthong (Rajamangala University of Technology)

(B1 continued on next page ...)

Development of the Museum Using Augmented Reality to Build Cultural Awareness (a17-345)
Speaker: Koranarin Sariya (Chulalongkorn University)

An Analysis of the Thai Police Cadets' Culture (a17-339)
Speaker: Waraporn Tachasuwan (Royal Police Cadet Academy)

Session C1: CULTURAL HERITAGE & DEVELOPMENT (venue: Inner Space, 1/F)

Chair: Wassana Bunyaphithak (Bunditpatanasilpa Institute)

The Study of Knowledge about String I-san Folk Music (a17-305)
Speaker: Yothin Phonkhet (Banditpatanasilpa Institute)

The Khon Nang Rao: An Ephemeral Thai Ritual (a17-309)
Speaker: Theeraphut Tongnim (Banditpatanasilpa Institute)

Applying Interdisciplinary Approach to the "Lavapura Dance" Performance (a17-310) – *NRRU Best Research Award*
Speaker: Derek Songkalayanawat (Banditpatanasilpa Institute)

The Creative Process of the Thai Neo-traditional Dance Performance Sakkarathewarat (a17-321)
Speaker: Jintana Saitongkum (Banditpatanasilpa Institute)

Women Teachers' Roles in Thai Performing Arts (a17-303)
Speaker: Wassana Bunyaphithak (Bunditpatanasilpa Institute)

Session D1: PRODUCTION, OPERATION & SUPPLY CHAIN MANAGEMENT (venue: Galaxy Room, 1/F)

Chair: Singha Chaveesuk (King Mongkut's Institute of Technology Ladkrabang)

Impact of Implementing Warehouse Management System on Auto Spare Part Industry Market in Saudi Arabia (a17-023)
Speaker: Mohammad Miralam (University of Jeddah)

Total Quality Management to Company's Performance with the Intervening Variable of Competitive Advantage (Research on PT RCI Mojokerto) (a17-082)
Speakers: Ahmad Ridwan (Kadiri University Kediri) & Dyah Sawitri (Gajayana University Malang)

A Multicriteria Approach for Supplier Selection: Case of Motorcycle Parts Manufacturer in Thailand (a17-133)
Speaker: Nuttawut Rojniruttikul (King Mongkut's Institute of Technology Ladkrabang)

A Structural Model of Enterprise Resource Planning Implementation Success in Thailand (a17-176)
Speaker: Singha Chaveesuk (King Mongkut's Institute of Technology Ladkrabang)

Session E1: BUSINESS ETHICS, CSR & SUSTAINABILITY (venue: Outer Space, 1/F)

Chair: Udomsak Sinthipong (Bangkok University)

Legal Aspects on Acquisition of Senators Suitable for Thailand (a17-323)
Speaker: Sirivadee Wiwithkhunakron (Nakhon Ratchasima Rajabhat University)

The Effect of Professionalism, Violation Severity Levels, and Internal Locus of Control to the Whistleblowing Intention (a17-113)
Speaker: Fury Khristianty Fitriyah (Universitas Padjadjaran)

(E1 continued on next page ...)

Legal Issues Concerning Seashore Erosion Management in Thailand (a17-302)
Speaker: Udomsak Sinthipong (Bangkok University)

Session E1 (Poster Presentation) (venue: Outer Space, 1/F)

ASEAN Community Preparation Model of Staff and Faculty of Education at Ubon Ratchathani Rajabhat University (a17-301)

Speaker: Jinawatara Pakotung (Ubon Ratchathani Rajabhat University)

Children's Picture Book Created from Thai Folktale Khun Chang Khunphaen (a17-313)

Speaker: Kanchana Cholsuwat (Suphanburi College of Fine Arts)

Thai Kitchen with Technique Tempera Mix Glue (a17-314)

Speaker: Wittaya Cholsuwat (Suphanburi College of Fine Arts)

Session F1: MARKETING, CONSUMER BEHAVIOR & PSYCHOLOGY (venue: Inner Space, 1/F)

Chair: Rajendar Garg (Indiana University of Pennsylvania)

The Development of Outsourcing Service Quality for Landscape Arrangements (a17-044)

Speaker: Kwunkamol Donkwa (Suranaree University of Technology)

The Mediation of Customer Satisfaction and Customer Trust on the Effect of Service Quality on Customer Loyalty of Entrepreneurial Customers at Shariah Pawnshop, Surakarta Branch Office, Indonesia (a17-052)

Speaker: Muthmainah Muthmainah (Universitas Sebelas Maret)

Impact of Chinese Celebrities in Chinese Print Advertising (a17-128)

Speaker: Rajendar Garg (Indiana University of Pennsylvania)

Session G1: MANAGEMENT & ENTREPRENEURSHIP (venue: Galaxy Room, 1/F)

Chair: Jeaneth Johansson (Lulea University of Technology)

Efficiency and the Hotel Management in Adaptation to Climate Change (a17-088)

Speaker: Nik Hazimah Nik Mat (University Malaysia Terengganu)

Design Innovation, Utilization of Information Technology, and the Role of Entrepreneurship Spirit for Creative Industries Gemstones and Fossils in Sangiran, Sragen (a17-048)

Speakers: Rahmawati (Universitas Sebelas Maret), Soenarto Mangunhardjo & Arum Darmawati (Yogyakarta State University)

The Blocked Mobility Hypothesis and Muslim Immigrant Entrepreneurship in Australia (a17-067) **SIBR Best Paper Award**

Speaker: Mohammad Alaslani (University of Technology, Sydney)

The Influence of Attitude, Subjective Norms, Behavioural Control, Leadership Skills and Self Efficacy on Entrepreneurial Intentions: A Survey of the University Students in Indonesia (a17-051)

Speaker: Muhammad Cholil (Universitas Sebelas Maret)

Analysis of Local Business Opportunities from Herbal Product (a17-156)

Speaker: Urasa Buatama (King Mongkut's Institute of Technology Ladkrabang)

(G1 continued on next page ...)

Gender in Crossroad: Queen Bees' and Alpha Males' Hinder Access to Entrepreneurial Finance (a17-160)
Speakers: Aija Voitkane & Jeaneth Johansson (Lulea University of Technology)

Session H1: EDUCATION & LABOUR MARKET (venue: Outer Space, 1/F)

Chair: Reongrudee Maneepakhathorn (Chulalongkorn University)

Innovation Education: Learning Innovation Process in Higher Education (a17-220)

Speaker: Fahri Benli (Sultan Qaboos University)

Education Comparison Learning Achievement Moral and Ethical in the Subject Man and Environment of 3 Faculty to be Taught Application the Philosophy of Sufficiency Economy (a17-311)

Speaker: Usaphorn Bunrueang (Bunditpatansipa Institute)

Creativity of Childhood and Satisfaction of Parents Attend the Telling Story Tales with Drawing Activity (a17-327)

Speaker: Chanissara Jaichaiphum (Suan Dusit University, Lampang Campus)

Teaching Educational Technology through Project Based Learning (PBL) for 21st Century Success (a17-330) – *NRRU Best Research Award*

Speaker: Rungrote Pongkitwitoon (Nakhon Ratchasima Rajabhat University)

Activities Model to Promote 12 National Core Values of Students of Demonstration School of The Higher Education Commission in Bangkok Metropolis (a17-343)

Speaker: Kanaporn Rasmimariya (Srinakharinwirot University)

Attitude toward of Business Economics Undergraduate Students in Faculty of Management of Buriram Rajabhat University (a17-346)

Speaker: Phawihan Panumram (Buriram Rajabhat University)

Developing Language-learning Materials for Publication: A Framework and Process for Material Design, Writing, and Evaluation (a17-329) – *NRRU Best Research Award*

Speaker: Reongrudee Maneepakhathorn (Chulalongkorn University)

Session J1: ACCOUNTING & FINANCE (venue: Inner Space, 1/F)

Chair: Setianingtyas Honggowati (Universitas Sebelas Maret)

The Implementation of Green Accounting in Determining Cost of Water on Land Water Resources Usage Tax at Hospitality Industry in Yogyakarta, Indonesia (a17-027)

Speakers: Christina Wiwik Sunarni & Anastasia Ambarriani (Atma Jaya Yogyakarta University)

Trading Decision Models based on the Index Movement Analysis of East Asian Stock Exchange Markets (a17-316)

Speaker: Kittisak Kerdprasop (Suranaree University of Technology) – *NRRU Best Research Award*

Corporate Governance and Strategic Management Accounting Disclosure: Evidence from Manufacturing Companies in Indonesia (a17-065)

Speaker: Setianingtyas Honggowati (Universitas Sebelas Maret)

Audit Committee Toward Internal Control Disclosure with the Existence of Foreign Directors as Moderation Variable (a17-209)

Speaker: Setianingtyas Honggowati (Universitas Sebelas Maret)

Audit Committee Characteristics and Voluntary Financial Disclosure (a17-210)

Speaker: Setianingtyas Honggowati (Universitas Sebelas Maret)

Session K1: EDUCATION & LABOUR MARKET (venue: Galaxy Room, 1/F)

Chair: Woranat Sangmanee (King Mongkut's Institute of Technology Ladkrabang)

Undergraduate Students' Need in Industrial Economics Subject (a17-136)

Speaker: Kanitta Ounarat (King Mongkut's Institute of Technology Ladkrabang)

Learning Expectation of Graduate Students in King Mongkut's Institute of Technology Ladkrabang in Master of Business Administration Program Specialize in Industrial Business (a17-137)

Speaker: Woranat Sangmanee (King Mongkut's Institute of Technology Ladkrabang)

Opinion of Graduate Students at King Mongkut's Institute of Technology Ladkrabang on ASEAN Economy Community (AEC) (a17-138)

Speaker: Woranat Sangmanee (King Mongkut's Institute of Technology Ladkrabang)

A Comparative Study of the Thai Translation between Two Translators of "Murder on the Orient Express" Written by Agatha Christie (a17-306)

Speaker: Sirawadee Chucherdasak (King Mongkut's University of Technology North Bangkok)

Readiness of Engineering Students at King Mongkut's Institute of Technology Ladkrabang when Thailand Joins ASEAN Economic Community: AEC (a17-139)

Speaker: Woranat Sangmanee (King Mongkut's Institute of Technology Ladkrabang)

Session L1: MARKETING & OPERATION MANAGEMENT (venue: Outer Space, 1/F)

Chair: Worapoj Sirichareechai (Dusit Thani College)

Proposed Marketing Strategy for Start-up Business at Modern Shopping Mall (Case Study of DEFSTIG Genuine Leather Goods Shop at Paris Van Java Resort and Lifestyle, Bandung, Indonesia) (a17-066)

Speaker: Cecep Safa'atul Barkah (Universitas Padjadjaran)

Parallel Customer Clustering: A Computational Performance Study (a17-308)

Speaker: Nittaya Kerdprasop (Suranaree University of Technology)

Factors Influencing Trust and Relationship Commitment to Use the Calibration Service: A Case Study of Oil & Gas Companies in Thailand (a17-340)

Speaker: Yada Korathad (Inctech Metrological Center Co. Ltd.)

Innovative Management Cycles for Research Conducting: Case of Universities in Thailand (a17-341)

Speaker: Boonsang Supapawawisit (Chulalongkorn University)

Critical Decision Making Influenced by Product Involvement, Information Search and Information Sources in Credence Goods and Service: Case Study of Implanted Medical Device in Thailand (a17-326)

Speaker: Worapoj Sirichareechai (Dusit Thani College)

Session M1: ORGANIZATION & OPERATION MANAGEMENT (venue: Inner Space, 1/F)

Chair: Endang Siti Rahayu (Universitas Sebelas Maret)

The Impact of Liberalization on Efficiency of the Malaysian Securities Firms (a17-103)

Speaker: Zaharul Nizal Zabidi (Universiti Malaysia Terengganu)

(M1 continued on next page ...)

Improving the Production Quality of Atsiri Oil Industry through the Introduction of Equipment and Diversification of Raw Materials (a17-061)

Speaker: Ignatia Sri Seventi P (Universitas Sebelas Maret)

Please, Give Me Some Space: When off the Job Activities Decrease the Taking Charge (a17-041)

Speaker: Anastasia Riani (Universitas Sebelas Maret)

The Role of Family Background on the Entrepreneurial Career Choice of Individuals (a17-135)

Speaker: Anil Boz Semerci (Hacettepe University)

Corn Development Strategy Through Value Chain Analysis in Grobogan, Central Java (a17-070)

Speaker: Endang Siti Rahayu (Universitas Sebelas Maret)

Session A2: BUSINESS ETHICS, CSR & SUSTAINABILITY (venue: Galaxy Room, 1/F)

Chair: Irma Rachmawati Maruf (Pasundan University)

Firm's Characteristics and CSR Disclosure, Indonesia and Malay Cases (a17-074)

Speaker: Evi Gantowati (Universitas Sebelas Maret)

Corporate Social Responsibility and Corporate Financial Performance: Evidence Set Index (a17-055)

Speaker: Asanai Thuravatikul (Maejo University)

The Relationship of Industry Type, Profitability, and Company Size, to Environmental Disclosure in Developing Country (a17-217)

Speaker: Yvonne Augustine Sudiby (Trisakti University)

Implementing the Sufficiency Economy Philosophy Applications in the Management of Enterprises for Sustainable Growth (a17-322)

Speaker: Suchada Bunrueang (Rajapark Institute Thailand)

Logistics Management in Thailand with Adaptation of Enterprises to the Logistics 4.0 (a17-319)

Speaker: Suchada Bunrueang (Rajapark Institute Thailand)

Marine Pollution from Shipping Business Activities in Indonesian Sea (a17-218)

Speaker: Irma Rachmawati Maruf (Pasundan University)

Session B2: ACCOUNTING & FINANCE (venue: Outer Space, 1/F)

Chair: Sri Wahyu Agustningsih (Universitas Sebelas Maret)

Big Bang Model to Accelerate the Readiness of Local Government Accounting System Implementation Accrual Basis in Indonesia (a17-057)

Speaker: Siti Nurlaela (Islamic Batik University of Surakarta Indonesia)

Audit Findings, Local Government Characteristics, and Local Government Financial Statement Disclosure (a17-121)

Speaker: Sri Wahyu Agustningsih (Universitas Sebelas Maret)

Independent Commissioner Against Mandatory Disclosure of Financial Performance as a Moderating Variable (a17-207)

Speaker: Sri Wahyu Agustningsih (Universitas Sebelas Maret)

(B2 continued on next page ...)

Women's Entrepreneurship of Pakistan: How are Women Possess and Supervising Home-based Businesses Aggravated to Grow (a17-162)

Speaker: Huma Rao (Bahauddin Zakariya University Multan)

Board-Auditor Interaction and Earnings Management: The Model of Company with Concentrated Ownership (a17-208)

Speaker: Sri Wahyu Agustiningih (Universitas Sebelas Maret)

Session C2: BANKING & FINANCE (venue: Inner Space, 1/F)

Chair: Takayasu Ito (Meiji University)

Culture and Corruption in Bank Lending Revisited (a17-047)

Speaker: Siwapong Dheera-aumpon (Kasetsart University)

Effects of Loan to Deposit Ratio on Stock Price Index in Banking Industries Listed in Indonesia Stock Exchange (a17-105)

Speaker: Ilyas Lamuda (Universitas Gorontalo)

Price Efficiency on Islamic Banks vs. Conventional Banks in Bahrain, UAE, Kuwait, Oman, Qatar & Saudi Arabia: Impact of Country Governance Analysis using DEA, OLS & GMM (a17-084)

Speaker: Fakarudin Kamarudin (Universiti Putra Malaysia)

Do Monetary Policy Expectations Influence Transmission Mechanism of Danish Interbank Market under the Negative Interest Rate Policy (a17-075)

Speaker: Takayasu Ito (Meiji University)

The Impact of Monetary Policy on Malaysian Deposit Rates: Comparative Analysis of Conventional and Islamic Finances (a17-167)

Speaker: Takayasu Ito (Meiji University)

Session D2: ORGANIZATION & HUMAN RESOURCES MANAGEMENT (venue: Galaxy Room, 1/F)

Chair: Anske Grobler (University of Pretoria, South Africa)

Developing Leadership Systems Inside University Using Jim Collins Method [Good to Great]: People Management Development to Face ASEAN Economic Community in Indonesia (a17-015)

Speaker: Rizka Nugraha Pratikna (Parahyangan Catholic University)

Chasing the Carrot – Effort Provision of Fixed-term Employees (a17-077)

Speaker: Philipp Grunau (Institute for Employment Research)

Relationship between Corporate Value and Performance in Parastatal Enterprise after Privatization (a17-111)

Speaker: Anorti Wijaya (Universitas Brawijaya)

Ensuring Corporate Citizenship by Following Nine Practical Stakeholder Relationship Management (SRM) Guidelines? What Businesses Reveal (a17-181) **SIBR Best Paper Award**

Speaker: Anske Grobler (University of Pretoria, South Africa)

Session E2: EDUCATION & LABOUR MARKET (venue: Outer Space, 1/F)

Chair: Siti Supeni (Slamet Riyadi University)

(E2 continued on next page ...)

Assessing Digital Literacy Skills Using a Self-Administered Questionnaire (a17-026)
Speaker: Sumruay Komlayut (Sukhothai Thammathirat Open University)

Intellectual Intelligence, Emotional Intelligence, and Lecturer Competence of Private University at Kopertis Region VII East Java (a17-080)
Speaker: Enni Sustiyatik & Ida Aju Brahmasari (Universitas 17 Agustus 1945 Surabaya)

The Role of Indonesian Students to Face ASEAN Economic Community (a17-114)
Speaker: Savitri Aditiany (Universitas Padjadjaran)

Recognising Economical Values in Using Traditional Games Based Learning Media in Early Childhood Education (a17-063)
Speaker: Siti Supeni (Slamet Riyadi University)

Session E2 (Poster Presentation) (venue: Outer Space, 1/F)

Role of Supply Chain Collaboration on Organizational Performance: An Empirical Investigation of Electronics Part Businesses in Thailand (a17-046)
Speaker: Veeraya Pataaarechachai (Maharakham University)

The Factors Effecting of Successful Accounting Information of Listed Companies in the Stock Exchange of Thailand (a17-064)
Speaker: Nattawut Tontiset (Maharakham University)

Examining the Relationships between SHRM Roles, Human Resource Professionals and Performance of Private Hospital in Thailand (a17-312)
Speaker: Sumittra Jirawuttinunt (Maharakham University)

The Effects of Organizational Justice on Organizational Citizenship Behavior (a17-056)
Speaker: Ploychompoo Kittikunchotiwt (Maharakham University)

Session F2: ECONOMIC, SOCIAL & CULTURAL DEVELOPMENT (venue: Inner Space, 1/F)

Chair: Thanapauge Chamaratana (Khon Kaen University)

The Impact of Decentralization of the Philippines' Public Health System on the Health Outcome (a17-196)
Speaker: David Joshua Delos Reyes (University of Santo Tomas)

Social Forces' Network for Corruption Preventing in Local Administration Organization of Thailand (a17-211)
Speaker: Wichai Thammavijitdej (Khon Kaen University)

Urbanization Impact toward Capital Assets Accession and Holding of Labor Households in Khon Kaen Peri-Urban (a17-212)
Speaker: Kritsada Phatchaney (Khon Kaen University)

Be "Thai-Aus" Together: Social Network Construction of Thai Student-Labourers in Sydney (a17-166)
Speaker: Thanapauge Chamaratana (Khon Kaen University)

Session G2: ECONOMIC POLICY & PUBLIC FINANCE (venue: Galaxy Room, 1/F)

Chair: Nurkholis Nurkholis (Universitas Brawijaya)

Convergence of Government Expenditure and Revenue Local Government in East Java, Indonesia (a17-131)

Speaker: Agus Suman (Universitas Brawijaya)

The Pattern of Taxpayers' Compliance in the Frame of Individual Cognitive Moral Development (a17-143)

Speaker: Aulia Rahman (Universitas Brawijaya)

An Analysis of Government Decision: The Impact of Increasing Infrastructure Budget on Regional Economic Growth (a17-152)

Speaker: Atu Bagus Wiguna (Universitas Brawijaya)

Techno-structural Intervention and its Effect on Readiness for Change in the Indonesian Government-owned Corporation (a17-178)

Speaker: Misbahuddin Azzuhri (Universitas Brawijaya)

Institutional Arrangement in Reducing Waste Water Impact (Study at Watesnegoro Village – Mojokerto Regency) (a17-122)

Speaker: Khusnul Ashar (Universitas Brawijaya)

Neuroeconomics: An Introduction as a Perspective in Tax-Planning (a17-086)

Speakers: Made Sudarma & Ayu Fury Puspita (Universitas Brawijaya)

Compatibility Analysis of Government Finance Statistics and Government Accounting Standards in Indonesia (a17-108)

Speaker: Nurkholis Nurkholis (Universitas Brawijaya)

Session H2: ACCOUNTING & FINANCE (venue: Outer Space, 1/F)

Chair: Wuryan Andayani (Universitas Brawijaya)

Country Risk Sensitivity on Beta Fundamental in FF Model: The Case of Indonesian Capital Market (a17-073)

Speaker: David Kaluge (Universitas Brawijaya)

Institutionalizing Organizational Change Through Accrual Accounting Within Indonesian Local Government (a17-092)

Speakers: Mirna Amirya & Yusuf Risanto (Universitas Brawijaya)

The Effects of Work Overload and Work Related Stress to Auditor's Turnover Intentions with Job Satisfaction as Intervening Variable (a17-116)

Speaker: Bambang Hariadi (Universitas Brawijaya)

Determinants and Consequences of Extended Disclosure Under Concentrated Ownership Environment: The Indonesian Evidence (a17-124)

Speaker: Hendi Subandi (Universitas Brawijaya)

The Influence of Investors Psychology in Investment Decision Making (a17-193)

Speaker: Noval Adib (Universitas Brawijaya)

The Effect of Family Ownership on Profit and Performance Company Management: Based on the Theory of Stewardship (a17-100)

Speaker: Wuryan Andayani (Universitas Brawijaya)

Session J2: ECONOMIC, SOCIAL & CULTURAL DEVELOPMENT (venue: Inner Space, 1/F)

Chair: Taufiq Ismail (Universitas Brawijaya)

Bureaucracy and Economic Development in Indonesia and ASEAN Countries (a17-123)

Speaker: Mohammad Khusaini (Universitas Brawijaya)

Does ICT Drive the Productivity and Economic Growth in Indonesia? (a17-149)

Speaker: Didied Poernawan Affandy (Universitas Brawijaya)

Infrastructure Development as an Effort to Eradicate Poverty in Trenggalek Regency (a17-151)

Speaker: Susilo (Universitas Brawijaya)

Sustainability Report and Creating Shared Value (CSV): Sustaining a Business of Urea Fertilizer Manufacture in the Case of Pupuk Kaltim Indonesia (a17-190)

Speaker: Eko Ganis Sukoharsono (Universitas Brawijaya)

Remittances Usage Phenomenon; Shifting Concept of Needs, from “Luxury Goods” to “Primary Goods” (Study on International Migrants in District Bululawang, Malang, Indonesia) (a17-191)

Speaker: Nurul Badriyah (Universitas Brawijaya)

The Existence of Disparity in East Java, Indonesia (a17-199)

Speaker: Rachmad Kresna Sakti (Universitas Brawijaya)

The Local Fiscal Policy and Economic Growth in Indonesia: a Policy Choice (a17-142)

Speaker: Candra Fajri Ananda (Universitas Brawijaya)

Local Residents Perception on Tourism Destination Readiness in South Coastal Area of Malang Regency, Indonesia (a17-150)

Speakers: Taufiq Ismail & Sigit Pramono (Universitas Brawijaya)

Session K2: EDUCATION & ETHICS (venue: Galaxy Room, 1/F)

Chair: Ali Djamhuri (Universitas Brawijaya)

The Innovation of Education Management in Local Government (a17-214)

Speaker: Suparat Sukwisuth (Burapha University)

Moral Intensity, Organizational Factors, and Ethical Decision Making: An Examination of Accounting and Business Postgraduate Students (a17-106)

Speaker: Yeney Widya Prihatiningtias (Universitas Brawijaya)

Integrity and Religiosity: Academic Fraud Prevention Factor (a17-134)

Speaker: Nurlita Novianti (Universitas Brawijaya)

How Technology Raise the Potencial of Fraud? Evidence in Indonesia (a17-153)

Speaker: Yuki Firmanto (Universitas Brawijaya)

Unveiling the Moral Imperatives Behind Higher Education Neoliberalization: A Case of an Indonesian University (a17-129)

Speaker: Ali Djamhuri (Universitas Brawijaya)

Session L2: MARKETING & INTERNATIONAL TRADE (venue: Outer Space, 1/F)

Chair: Putu Mahardika Adi Saputra (Universitas Brawijaya)

The Formation of Destination Loyalty in Indonesia Tourism: A Case on Theme Parks in Batu East Java (a17-147)

Speaker: Fatchur Rohman (Universitas Brawijaya)

Influence of Personality on Impulsive Buying Behavior Among Indonesian Young Consumers (a17-177)

Speakers: Dimas Hendrawan & Dian Ari Nugroho (Universitas Brawijaya)

The Role of Foreign Direct Investment to Export Performance and Gross Domestic Product for ASEAN Members (a17-089)

Speaker: Moh. Athoillah (Universitas Brawijaya)

Does Economic Openness Has Benefit for ASEAN Economics Development? (a17-126)

Speaker: Dwi Budi Santosa (Universitas Brawijaya)

Composition or Distance Sensitivity Effect: Exploring the Elasticity of Trade to Distance in China and Indonesia Trade Activities (a17-140)

Speaker: Putu Mahardika Adi Saputra (Universitas Brawijaya)

Session M2: BANKING & FINANCE (venue: Inner Space, 1/F)

Chair: Erwin Saraswati (Universitas Brawijaya)

Investigating Efficiency through Data Envelopment Analysis and its Determinants Among Indonesian Banks (a17-098)

Speaker: Imam Subekti (Universitas Brawijaya)

Innovative Islamic Model of Baitul Maal wa Tamwil (BMT) for SME Financing; from Start Up to Expand (a17-099)

Speaker: Asfi Manzilati (Universitas Brawijaya)

The Comparative Study of Banking Efficiency in ASEAN-5: Data Envelopment Analysis (DEA) Approach (a17-169)

Speaker: Setyo Tri Wahyudi (Universitas Brawijaya)

The Analyze of 'Bank Titil' Role in Sidogiri Traditional Market in Pasuruan, East Java (a17-118)

Speaker: Multifiah (Universitas Brawijaya)

Banking Efficiency: Determinant of Cost and Profitability (Stochastic Frontier Approach) Case Study in Indonesia Banking (a17-090)

Speaker: Erwin Saraswati (Universitas Brawijaya)

~ END ~

Guide to Presenters and Session Chairs

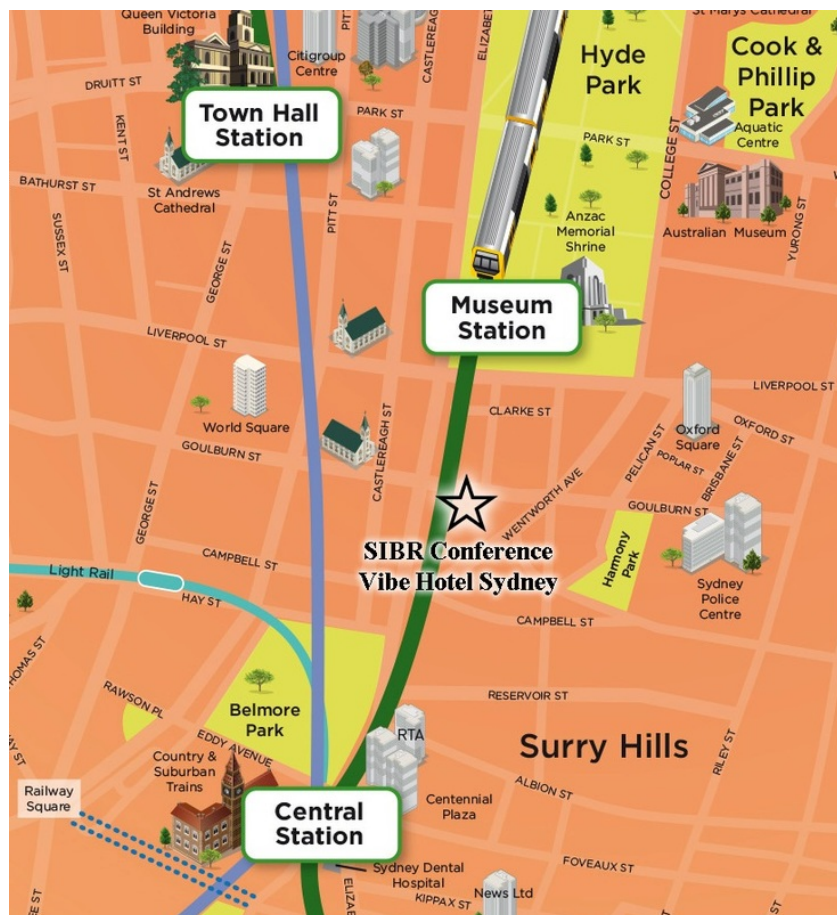
- Please be ready in the session five minutes before the schedule.
- The session chair will allocate the available time equally among all papers to be presented in the session. Each paper has to be presented within the time allotted (approx. 15 minutes) sparing 3 minutes for discussion.
- The session chair should remind each speaker three minutes before the time he/she is expected to end the presentation. If a speaker goes beyond the time allotted, the session chair should remind him/her to end the presentation.
- SIBR assumes no responsibility if presenters are unable to finish their presentation in the assigned session for any reasons.
- Projector and computer will be provided in each conference room. Speakers are reminded to store their presentation files in their own USB storage devices. The organizer will NOT provide Internet connection.

Conference Registration Desk

Conference participants will collect attendance certificates, proceedings (CD-ROM) and official receipts from the registration desk. Please mention your Paper I.D. code at the desk to speed up the process. No certificates will be provided to non-registered co-authors. The conference registration desk will be open from AM08:30 to PM16:00 on April 15-16, 2017. Presenters assigned to morning sessions can register after they have finished their presentation.

Conference Venue – Vibe Hotel Sydney

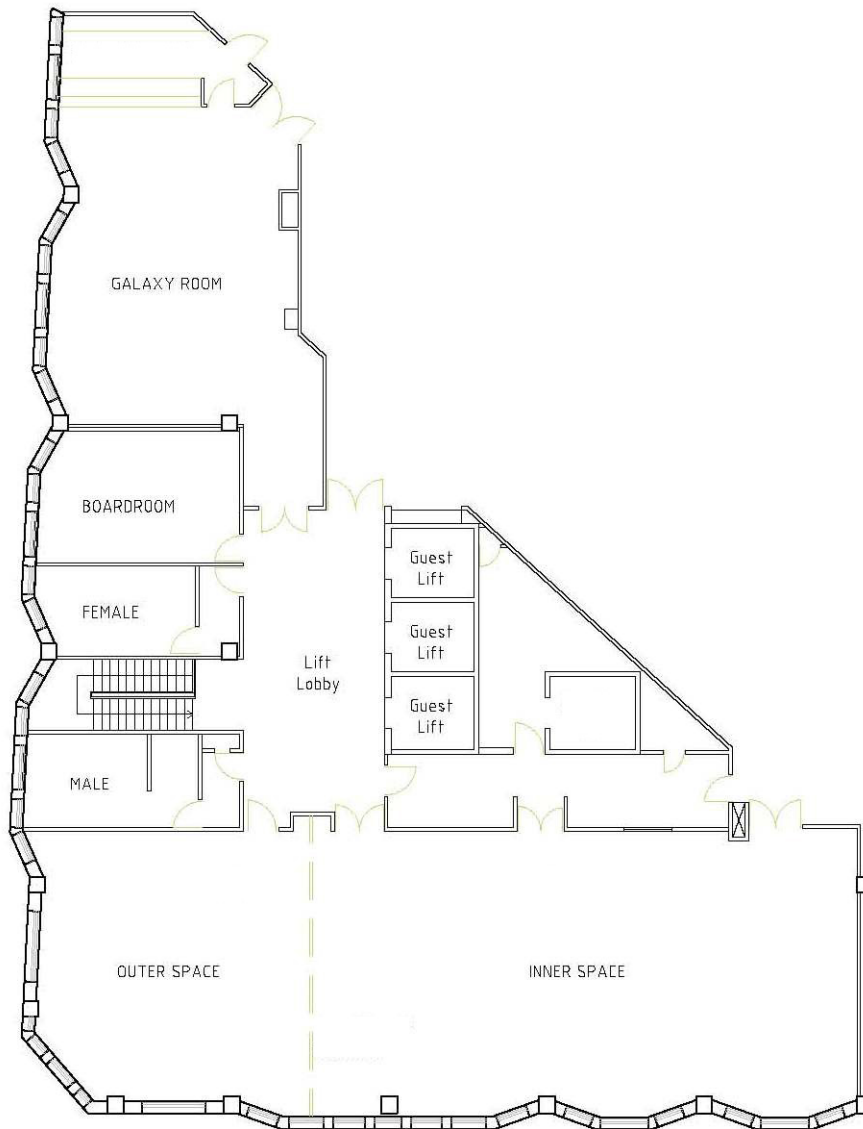
Visit <http://sibresearch.org/sydney-venue.html> for more information and maps.



Notes:

- **From the Sydney International Airport:** The easiest way is to take the airport train ([AirportLink](#)) from **International Airport Station** to **Museum Station**. The conference hotel (**Vibe Hotel Sydney**) is just 5-10 minutes walk from **Museum Station**. You may visit the [Sydney International Airport official website](#) for other transport options..
- Please download the full map from: <http://sibresearch.org/sydney-venue.html>.

Floor Plan (1st floor)



List of Delegates

Paper ID	Delegate	Affiliation
-	Abdullah R. Alotaibi	College of Business Studies at PAAET, Kuwait
a17-131	Agus Suman	Universitas Brawijaya
a17-082	Ahmad Ridwan	Kadiri University Kediri
a17-160	Aija Voitekane	Lulea University of Technology
a17-129	Ali Djamhuri	Universitas Brawijaya
a17-027	Anastasia Ambarriani	Atma Jaya Yogyakarta University
a17-041	Anastasia Riani	Universitas Sebelas Maret
a17-135	Anıl Boz Semerci	Hacettepe University
a17-111	Anorti Wijaya	Universitas Brawijaya
a17-181	Anske Grobler	University of Pretoria, South Africa
a17-048	Arum Darmawati	Yogyakarta State University
a17-055	Asanai Thuravatikul	Maejo University
a17-099	Asfi Manzilati	Universitas Brawijaya
a17-152	Atu Bagus Wiguna	Universitas Brawijaya
a17-143	Aulia Rahman	Universitas Brawijaya
a17-086	Ayu Fury Puspita	Universitas Brawijaya
a17-037	Ayukonchong Agborndip	University of Erfurt
a17-116	Bambang Hariadi	Universitas Brawijaya
a17-341	Boonsang Supapawawisit	Chulalongkorn University
a17-142	Candra Fajri Ananda	Universitas Brawijaya
a17-066	Cecep Safa'atul Barkah	Universitas Padjadjaran
-	Chalermchai Piromrak	Bunditpatanasilpa Institute
a17-327	Chanissara Jaichaiphum	Suan Dusit University, Lampang Campus
a17-027	Christina Wiwik Sunarni	Atma Jaya Yogyakarta University
a17-196	David Joshua Delos Reyes	University of Santo Tomas
a17-073	David Kaluge	Universitas Brawijaya
a17-310	Derek Songkalayanawat	Bunditpatanasilpa Institute
a17-177	Dian Ari Nugroho	Universitas Brawijaya
a17-149	Didied Poernawan Affandy	Universitas Brawijaya
a17-177	Dimas Hendrawan	Universitas Brawijaya
a17-126	Dwi Budi Santosa	Universitas Brawijaya
a17-082	Dyah Sawitri	Gajayana University Malang
a17-190	Eko Ganis Sukoharsono	Universitas Brawijaya
a17-070	Endang Siti Rahayu	Universitas Sebelas Maret
a17-080	Enni Sustiyatik	Universitas 17 Agustus 1945 Surabaya
a17-090	Erwin Saraswati	Universitas Brawijaya
a17-074	Evi Gantiyowati	Universitas Sebelas Maret
a17-220	Fahri Benli	Sultan Qaboos University
a17-084	Fakarudin Kamarudin	Universiti Putra Malaysia
a17-147	Fatchur Rohman	Universitas Brawijaya
a17-113	Fury Khristianty Fitriyah	Universitas Padjadjaran
a17-124	Hendi Subandi	Universitas Brawijaya
a17-162	Huma Rao	Bahauddin Zakariya University Multan
a17-080	Ida Aju Brahmasari	Universitas 17 Agustus 1945 Surabaya
a17-061	Ignatia Sri Seventi P	Universitas Sebelas Maret
a17-105	Ilyas Lamuda	Universitas Gorontalo
a17-098	Imam Subekti	Universitas Brawijaya
a17-093	Inderbir Kaur	GSSDGS, Khalsa College, India

a17-218	Irma Rachmawati Maruf	Pasundan University
a17-160	Jeaneth Johansson	Lulea University of Technology
a17-301	Jinawatara Pakotung	Ubon Ratchathani Rajabhat University
a17-321	Jintana Saitongkum	Banditpatanasilpa Institute
a17-343	Kanaporn Rasmimariya	Srinakharinwirot University
a17-313	Kanchana Cholsuwat	Suphanburi College of Fine Arts
a17-136	Kanitta Ounarat	King Mongkut's Institute of Technology Ladkrabang
a17-122	Khusnul Ashar	Universitas Brawijaya
a17-316	Kittisak Kerdprasop	Suranaree University of Technology
a17-345	Koranarin Sariya	Chulalongkorn University
a17-342	Korn Sariya	Mahachulalongkornrajavidyalaya University
a17-212	Kritsada Phatchaney	Khon Kaen University
-	Krongthip Chaichan	Nakhon Ratchasima Rajabhat University
a17-044	Kwunkamol Donkwa	Suranaree University of Technology
a17-014	Lillian Kamal	University of Hartford
a17-086	Made Sudarma	Universitas Brawijaya
a17-092	Mirna Amirya	Universitas Brawijaya
a17-178	Misbahuddin Azzuhri	Universitas Brawijaya
a17-089	Moh. Athoillah	Universitas Brawijaya
a17-067	Mohammad Alaslani	University of Technology, Sydney
a17-123	Mohammad Khusaini	Universitas Brawijaya
a17-023	Mohammad Miralam	University of Jeddah
a17-043	Mongkon Donkwa	Khon Kaen University
a17-051	Muhammad Cholil	Universitas Sebelas Maret
a17-118	Multifiah	Universitas Brawijaya
a17-052	Muthmainah Muthmainah	Universitas Sebelas Maret
a17-064	Nattawut Tontiset	Maharakham University
a17-088	Nik Hazimah Nik Mat	University Malaysia Terengganu
a17-308	Nittaya Kerdprasop	Suranaree University of Technology
a17-193	Noval Adib	Universitas Brawijaya
a17-108	Nurkholis Nurkholis	Universitas Brawijaya
a17-134	Nurlita Novianti	Universitas Brawijaya
a17-191	Nurul Badriyah	Universitas Brawijaya
a17-133	Nuttawut Rojniruttikul	King Mongkut's Institute of Technology Ladkrabang
-	Onsiri Wimontham	Nakhon Ratchasima Rajabhat University
a17-346	Phawihan Panumram	Buriram Rajabhat University
a17-077	Philipp Grunau	Institute for Employment Research
a17-056	Ploychompoo Kittikunchotiwut	Maharakham University
a17-140	Putu Mahardika Adi Saputra	Universitas Brawijaya
a17-199	Rachmad Kresna Sakti	Universitas Brawijaya
a17-048	Rahmawati	Universitas Sebelas Maret
a17-128	Rajendar Garg	Indiana University of Pennsylvania
a17-329	Reongrudee Maneepakhathorn	Chulalongkorn University
a17-015	Rizka Nugraha Pratikna	Parahyangan Catholic University
a17-330	Rungrote Pongkitwitoon	Nakhon Ratchasima Rajabhat University
-	Samnao Phatisena	Nakhon Ratchasima Rajabhat University
a17-157	Sarah Rum Handayani Pinta	Universitas Sebelas Maret
a17-114	Savitri Aditiany	Universitas Padjadjaran
a17-065, a17-209, a17-210	Setianingtyas Honggowati	Universitas Sebelas Maret
a17-169	Setyo Tri Wahyudi	Universitas Brawijaya
-	Shaker Alshamlan	James Cook University

a17-150	Sigit Pramono	Universitas Brawijaya
a17-176	Singha Chaveesuk	King Mongkut's Institute of Technology Ladkrabang
a17-306	Sirawadee Chuchersak	King Mongkut's University of Technology North Bangkok
a17-323	Sirivadee Wiwithkhunakron	Nakhon Ratchasima Rajabhat University
a17-057	Siti Nurlaela	Islamic Batik University of Surakarta Indonesia
a17-063	Siti Supeni	Slamet Riyadi University
a17-047	Siwapong Dheera-aumpon	Kasetsart University
a17-048	Soenarto Mangunhardjo	Yogyakarta State University
a17-325	Somphinith Muangthong	Rajamangala University of Technology
a17-121, a17-207, a17-208	Sri Wahyu Agustiningih	Universitas Sebelas Maret
a17-319, a17-322	Suchada Bunrueang	Rajapark Institute Thailand
a17-333	Suchada Namjaidee	Nakhon Ratchasima Rajabhat University
a17-312	Sumittra Jirawuttinunt	Maharakham University
a17-026	Sumruay Komlayut	Sukhothai Thammathirat Open University
a17-214	Suparat Sukwisuth	Burapha University
a17-151	Susilo	Universitas Brawijaya
-	Syed Zafar Abbas	Aliz Educational Institutions
a17-075, a17-167	Takayasu Ito	Meiji University
-	Tanida Phatisena	Nakhon Ratchasima Rajabhat University
a17-150	Taufiq Ismail	Universitas Brawijaya
a17-166	Thanapauge Chamaratana	Khon Kaen University
a17-309	Theeraphut Tongnim	Bunditpatanasilpa Institute
a17-302	Udomsak Sinthipong	Bangkok University
a17-156	Urasa Buatama	King Mongkut's Institute of Technology Ladkrabang
a17-311	Usaphorn Bunrueang	Bunditpatansipa Institute
a17-046	Veeraya Pataraarechachai	Maharakham University
a17-339	Waraporn Tachasuwan	Royal Police Cadet Academy
a17-303	Wassana Bunyaphithak	Bunditpattanasilpa Institute
a17-211	Wichai Thammavijitdej	Khon Kaen University
-	Wissamas Pakdeekul	Nakhon Ratchasima Rajabhat University
a17-314	Wittaya Cholsuwat	Suphanburi College of Fine Arts
a17-137, a17-138, a17-139	Worarat Sangmanee	King Mongkut's Institute of Technology Ladkrabang
a17-326	Worapoj Sirichareechai	Dusit Thani College
a17-100	Wuryan Andayani	Universitas Brawijaya
a17-340	Yada Korathad	Inctech Metrological Center Co. Ltd.
a17-106	Yeney Widya Prihatiningtias	Universitas Brawijaya
a17-305	Yothin Phonkhet	Banditpatanasilpa Institute
a17-153	Yuki Firmanto	Universitas Brawijaya
a17-092	Yusuf Risanto	Universitas Brawijaya
a17-217	Yvonne Augustine Sudibyo	Trisakti University
a17-103	Zaharul Nizal Zabidi	Universiti Malaysia Terengganu
a17-031	Zeenat Ismail	Institute of Business Administration Karachi