

PROGRAM (Updated Final Version)

	DAY 1 (February 16, 2015)	DAY 2 (February 17, 2015)
Registration 8:30-16:00 (Day 1-2)		9:00-10:35 Sessions A2, B2, C2
	10:35-10:50 Opening Tea Reception	10:35-10:50 Tea break
	10:50-12:00 Opening Address & Keynote Speech*	10:50-12:15 Sessions D2, E2, F2
	12:00-13:25 Lunch (Kontiki, Mezzanine level)	12:15-13:25 Lunch (Kontiki, Mezzanine level)
	13:25-15:00 Sessions G1, H1, J1	13:25-15:00 Sessions G2, H2
	15:00-15:15 Tea break	15:00-15:15 Closing Tea Reception
	15:15-16:40 Sessions K1, L1, M1	

* **Keynote Speech:** “*University Ranking Perspective: UniKL’s We4Asia as a Model to Achieve One of the Best University in Asia*” by Professor Dr Azanam Shah Hashim, Deputy President, Universiti Kuala Lumpur (**venue: Ballroom**).

Session G1: ECONOMIC, SOCIAL & CULTURAL DEVELOPMENT (venue: Selangor)

Chair: Paritosh Ghosh (Red Deer College, Canada)

Growth and Resource Scarcity: A Mining Project Evaluation in the Asia-Pacific Region (k15-017)

Speaker: Nam Foo (Curtin University)

Analysis of Medical Savings Accounts as a Mechanism for Financing Private Health Care Expenses in Poland (k15-062)

Speaker: Marta Borda (Wroclaw University of Economics)

Fisheries Poverty Reduction in East Java: Using Sustainability Livelihood Approach (SLA) (k15-130) **Best Paper Award**

Speaker: Andhika P. Herlambang (University of Brawijaya)

How to Increase Value Added of Porang (*Amorphophallus Oncophyllus*) as Forestry Commodity? (k15-141)

Speaker: Dwi Budi Santoso (University of Brawijaya)

NO-BITE Strategy – Experiences and Lessons Learnt from a Dengue Fever Action Research around the Klang Valley (k15-007)

Speaker: Karl Wagner (Universiti Kuala Lumpur Business School)

Session H1: CSR and SUSTAINABILITY (venue: Pahang)

Chair: Mohammad Haider (Kwansei Gakuin University)

Businessmen’s Awareness Level in the Implementation of Corporate Social Responsibility (k15-026)

Speaker: Endang Raino Wirjono (Universitas Atma Jaya Yogyakarta)

Estimating the Hidden Corporate Social Performance of Japanese Firms (k15-086) **Best Paper Award**

Speaker: Megumi Suto (Waseda University)

Eco-efficiency in Libya: The Effects of Industrial Sector (k15-139)

Speaker: Goma Bedawi Ahmed (University Putra Malaysia)

The Effectiveness Analysis of Grant Scheme “POKMAS” Achieving Rural Development Sustainability (k15-140)

Speaker: Syafrilenti (University of Brawijaya)

Managerial Perception on Assurance in Sustainability Reporting in Japan (k15-132)

Speaker: Mohammad Haider (Kwansei Gakuin University)

Session J1: FINANCIAL MARKETS (venue: Penang)

Chair: Leila C. Kabigting (University of Guam)

VC, Where Art Thou? A Case of Japan's Biotechnology Industry (k15-037) **Best Paper Award**
Speaker: Shiaw Jia Eyo (Hosei University)

The Evaluation of Non-Economic Events towards the LQ-45 Index in Indonesia Stock Exchange by Using Event Study Method (k15-030)
Speaker: Sang Ayu Putu Piastini Gunaasih (Atma Jaya Yogyakarta University)

The Volatility of Industrial Stock Returns and An Empirical Test of Arbitrage Pricing Theory (k15-126)
Speaker: Bahri (State Polytechnic of Ujung Pandang)

An Analysis of Guam's Bonds' Performance (k15-096)
Speaker: Leila C. Kabigting (University of Guam)

Session K1: MANAGEMENT SCIENCE & SUPPLY CHAIN (venue: Selangor)

Chair: Aline Carolina Lopes Pessoa (Governor do Estado de Pernambuco)

Multi-floor Facility Layout Planning by Using Simulated Annealing-based Procedures (k15-102)
Speaker: Atsushi Suzuki (Dokkyo University)

The Influence of Collaboration and Business Process on Competitiveness and Its Implications for Supply Chain Performance of Garment Industry (k15-116)
Speaker: Akhmad Yunani (Politeknik Pos Indonesia)

Solution Techniques to the Emission-Economic Dispatch: State of the Art (k15-091)
Speaker: Mohammed AlRashidi (College of Technological Studies (PAAET))

The Impact of Supply Chain Management Practices on Competitive Advantage (k15-099)
Speaker: Minrohayati (Universitas Terbuka)

The Utilization of ERP (Enterprise Resource Planning) in Public Management. Case of Study: PE-Integrado (k15-108)
Speaker: Aline Carolina Lopes Pessoa (Governor do Estado de Pernambuco)

Session L1: ACCOUNTING & FINANCE (venue: Pahang)

Chair: Modar Abdullatif (Princess Sumaya University for Technology)

Measuring the Impact of Business Risks on The Quality of the Auditing Process (k15-067)
Speaker: Ahmad Adel Jamil Abdallah (Al-Zaytoonah University of Jordan)

Do Investor Sentiment, Weather and Catastrophe Effects Improve Hedging Performance? Evidence from the Taiwan Options Market (k15-084) **Best Paper Award**
Speaker: Chia-Chien Chang (National Kaohsiung University of Applied Science)

Impact of FDI Inflows on Real GDP in Estonia: Evidence from Cointegration Approach and Causality Test (k15-011) **Best Paper Award**
Speaker: Khalid Kisswani (Gulf University for Science and Technology)

Auditing Under Economic Uncertainty: The Case of Auditing Fair Value and Going Concern in Jordan (k15-081)
Speaker: Modar Abdullatif (Princess Sumaya University for Technology)

Session M1: MANAGEMENT & ENTREPRENEURSHIP (venue: Penang)

Chair: Sulaiman Sajilan (Dean, Universiti Kuala Lumpur Business School)

Enterprise Risk Management in China: The Impacts on Organizational Performance (k15-057)
Speaker: Xiang Zou (University of Malaya)

A Study of the Nature of Adaptation to Learning Organization Dimensions: The Case of Jordanian Industrial Sector (k15-043) **Best Paper Award**
Speaker: Ahmed Al-Qatamin (Arab Open University - Jordan branch)

Cultural Orientations, Entrepreneurial Competencies and SMEs Business Success: The Contingent Roles of Environmental Turbulence and Network Competence (k15-003)
Speakers: Sulaiman Sajilan and Shehnaz Tehseen (Universiti Kuala Lumpur Business School)

Session A2: BANKING & FINANCE (venue: Selangor)

Chair: Brian Metcalfe (Brock University)

An Evaluation of Islamic Banking at Bank Muscat, Oman (k15-077)
Speaker: Vijayesh Kumar (University of Buraimi, Oman)

Participation of Japanese Regional Banks in International Syndicated Loans: Lending Behavior and Explanatory Factors (k15-114)
Speaker: Masaki Yamaguchi (Yamagata University, Japan)

Analysis of Customer Mindset Change and Accounting Practice of Garbage Bank as Medium of Edupreneurship a Study on Garbage Bank of Badegan, Indonesia (k15-019)
Speaker: Anna Purwaningsih (University of Atma Jaya Yogyakarta)

An Impact Assessment of Corporate Social Responsibility on Commercial Banks in Nigeria (k15-028)
Speaker: Danladi Ibrahim Musa (The Federal Polytechnic Damaturu, Nigeria)

The Impact of Financial Reform on the Success of Foreign Banks in China (k15-109)
Speaker: Brian Metcalfe (Brock University)

Session B2: ORGANIZATION & HUMAN RESOURCES MANAGEMENT (venue: Pahang)

Chair: Sheikh Muhamad Hizam B. Hj. Sh. Khairuddin (Universiti Kuala Lumpur Business School)

The Effects of Benevolent Leadership in Ameliorating Turnover Problem in Hotel Industry (k15-071)
Speaker: Jue Xin Tan (Universiti Putra Malaysia)

The Struggles to Communicate Among Diverse Work Teams in Korean Companies (k15-088)
Speaker: Corey Nelson (Hankuk University of Foreign Studies)

Conceptual Framework of Factors Affecting SMEs Manufacturing Business Performance (k15-001)
Speaker: Noor ul Hadi (Universiti Kuala Lumpur Business School)

The Problems of Hybridizing Features of L1 & L2 in the Literature and Teaching of English Language in Nigerian (k15-032)
Speaker: Abdullahi Kaigama (The Federal Polytechnic Damaturu, Nigeria)

Occupational Stress Among Entrepreneurs in Malaysian SMEs: A Conceptual Framework (k15-006)
Speaker: Sheikh Muhamad Hizam B. Hj. Sh. Khairuddin (Universiti Kuala Lumpur Business School)

Session C2: MARKETING, CONSUMER BEHAVIOR & PSYCHOLOGY (venue: Penang)

Chair: Sultan Rehman Sherief (Management and Science University)

Cross-Cultural Marketing and Consumer Information Design (k15-075)

Speaker: Sean McGovern (Setsunan University, Japan)

Trust on Online Social Networking Media Friends of 'Generation Y': A Multi-item Measurement Scale (k15-027)

Speaker: Sabreena Zoha Amin (University of Western Sydney)

The Analysis of Consumers' Behavior Towards Modern Retail Store and Traditional Shop (A Case Study of Young Consumers in Lowokwaru District, Malang) (k15-083)

Speaker: M.Umar Burhan (University of Brawijaya)

Social Media as the Enable to Customer-to-Customer Interaction in Indonesia Life Insurance (k15-137)

Speaker: Kartina Sury (Bina Nusantara University)

Postmodern of Retailers' Brand Users – Clustering Approach (k15-076) **Best Paper Award**

Speaker: Sultan Rehman Sherief (Management and Science University)

Session D2: EDUCATION & LABOUR MARKET (venue: Selangor)

Chair: JiHyun Shim (Sookmyung Women's University)

A Knowledge Management Behavior in the Private College (k15-104)

Speaker: Dian Indiyati (Jenderal Achmad Yani University)

Employability Skills in Marketing Careers: Gap Analysis of Education and Profession (k15-039)

Speaker: Kausar Saeed (Institute of Business Management)

Developing an Evaluation System for Korean NHRD (k15-123)

Speakers: JiHyun Shim and JiHyun Oh (Sookmyung Women's University)

Factors Affecting Employment after Vocational Training of NHRD in Korea (k15-124)

Speakers: JiHyun Shim and JiHyun Oh (Sookmyung Women's University)

Preparing Aging Workers for the Future: Implication for Facilitating Middle-aged Workforce following the Decline of Working Age Population in Korea (k15-129)

Speakers: JiHyun Shim and JiHyun Oh (Sookmyung Women's University)

Session E2: ACCOUNTING & FINANCE (venue: Pahang)

Chair: Hafezali Iqbal Hussain (Universiti Kuala Lumpur Business School)

The Comparability of Outcome Feedback Review on Internal Control Learning (k15-018)

Speakers: Yavida Nurim (Universitas Janabadra) and Nung Harjanto (Akademi Akuntansi YKPN)

Financial Distress in Business Valuation "What are the Costs of Financial Distress and When They Occur?" (k15-045)

Speakers: Lucie Rudolfova and Tatiana Skerlikova (University of Economy Prague)

Forward Contracts Rewards in Current Financial Markets and Adjusted to Islamic Law (k15-133)

Speaker: Ehab Injadat (Universiti Sains Islam Malaysia)

Effect of Auditor and Client Negotiation Experience on Audit Results: An Experimental Test (k15-050)

Speakers: Fitria Husnatarina and Leliana Maria Angela (Palangka Raya University)

Agency Problems and Its Impact and Relevance to Firms Borrowing (k15-005)

Speaker: Hafezali Iqbal Hussain (Universiti Kuala Lumpur Business School)

Session F2: MANAGEMENT & ENTREPRENEURSHIP (venue: Penang)

Chair: Sulaiman Sajilan (Dean, Universiti Kuala Lumpur Business School)

Analyzing Factors Affecting Performance of Co-operative in Cimahi (k15-097)

Speaker: Heni Nurani Hartikayanti (Jenderal Achmad Yani University)

Entrepreneurial Orientation Effects on Market Orientation and SMEs Business Performance – A SEM Approach (k15-002)

Speaker: Mohd Farid Shamsudin (Universiti Kuala Lumpur Business School)

Skill Acquisition and Entrepreneurial Development Training Programmes: Pragmatic Approaches to Enhance Social Peace and Stability in Ondo State, Nigeria (k15-103)

Speaker: Erinsakin Martins Ojo (Adeyemi College of Education)

Impact of Entrepreneur's Demographic Characteristics and Personal Characteristics on Firm's Performance under the Mediating role of Entrepreneur Orientation (k15-004)

Speakers: Sulaiman Sajilan, Shehnaz Tehseen and Noor ul Hadi (Universiti Kuala Lumpur Business School)

Session G2: QUANTITATIVE FINANCE & ECONOMETRICS (venue: Selangor)

Chair: Angella Faith Lapukeni (University of Zambia/Reserve Bank of Malawi)

Developing a Corporate Financial Distress Prediction Model (k15-112)

Speaker: Choon Kiat Liew (Universiti Utara Malaysia)

The Interaction among Housing Markets, Stock Markets and Macroeconomic Factors- Bubbles Testing in Hong Kong, Shanghai and Taipei's Housing Markets (k15-092)

Speaker: John Hu (Chung Yuan Christian University)

The Impact of Financial Inclusion on Monetary Policy Effectiveness: The Case of Malawi (k15-089)

Speaker: Angella Faith Lapukeni (University of Zambia/Reserve Bank of Malawi)

Session H2: ACCOUNTING & FINANCE (venue: Pahang)

Chair: Gurmeet Singh (N. R. Institute of Business Management)

Testing Model Treynor-Mazuy Condition in Bull and Bear Markets (k15-105)

Speaker: V. Santi Paramita (Universitas Jenderal Achmad Yani)

Corporate Governance Perception Index, Performance and Value of the Firm in Indonesia (k15-094)

Speaker: Zaidirina (Universitas Lampung)

A Study of the Strategic Performance of Shareholding Industrial Organizations in Jordan: Using Z- Score Model (k15-051)

Speaker: Sulieman Ibraheem Shelash Al-hawary (Al al-Bayt University)

A Study on the Analysis of Legal and Economic Factors Affecting Capital Structure in India and Pakistan (k15-040)

Speaker: Gurmeet Singh (N. R. Institute of Business Management)

~ END ~

Guide to Presenters and Session Chairs

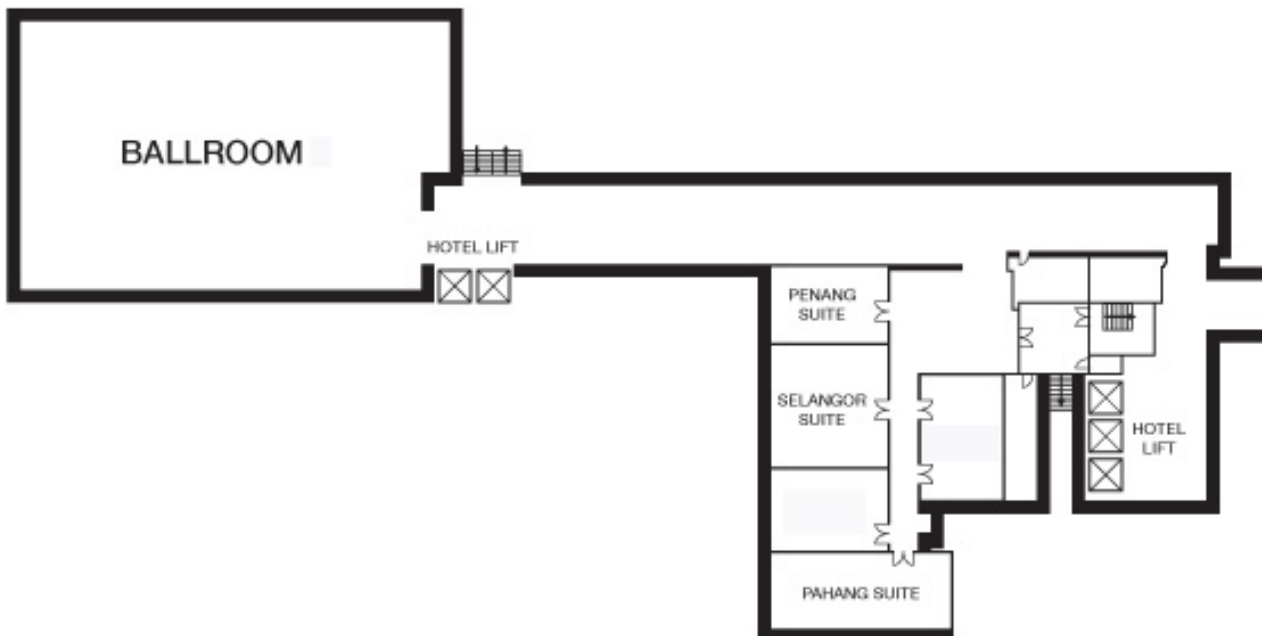
- Please be ready in the session five minutes before the schedule.
- The session chair will allocate the available time equally among all papers to be presented in the session. Each paper has to be presented within the time allotted sparing 3-5 minutes for discussion.
- The session chair should remind the speaker three minutes before the time he or she is expected to end the presentation. If the speaker goes beyond the time allotted, the session chair should remind her or him to end the presentation.
- The organizers assume no responsibility if speakers are unable to finish their presentation in the assigned session for any reasons.
- LCD projector, screen and laptop (notebook) computer will be provided. Speakers are reminded to store their presentation files in their own USB storage devices. The organizer will NOT provide Internet connection.

Conference Venue

Visit <http://sibresearch.org/kuala-lumpur-venue.html> for location and maps.

Conference Registration Desk

Conference participants will collect attendance certificate, best paper award certificate (awardees only), proceedings CDROM and official receipt from the registration desk. Please mention your Paper I.D. code at the desk to speed up the process. The conference registration desk will be open from AM08:30 to PM16:00 on February 16th-17th, 2015. Speakers assigned to morning sessions can register after they have finished their presentation.

Floor Plan (Level 2, Federal Hotel Kuala Lumpur)**Acknowledgement:**

Special thanks are due to the administrative group (Universiti Kuala Lumpur Business School) for their time and effort contributed to the SIBR-UniKL 2015 Conference.

List of Delegates

Paper ID	Delegate	Affiliation
k15-032	Abdullahi Kaigama	The Federal Polytechnic Damaturu, Nigeria
k15-067	Ahmad Adel Jamil Abdallah	Al-Zaytoonah University of Jordan
k15-043	Ahmed Al-Qatamin	Arab Open University - Jordan branch
k15-116	Akhmad Yunani	Politeknik Pos Indonesia
k15-108	Aline Carolina Lopes Pessoa	Governo do Estado de Pernambuco
k15-130	Andhika P. Herlambang	University of Brawijaya
k15-089	Angella Faith Lapukeni	University of Zambia/Reserve Bank of Malawi
k15-019	Anna Purwaningsih	University of Atma Jaya Yogyakarta
k15-102	Atsushi Suzuki	Dokkyo University
k15-126	Bahri	State Polytechnic of Ujung Pandang
k15-109	Brian Metcalfe	Brock University
k15-084	Chia-Chien Chang	National Kaohsiung University of Applied Science
k15-112	Choon Kiat Liew	Universiti Utara Malaysia
k15-088	Corey Nelson	Hankuk University of Foreign Studies
k15-028	Danladi Ibrahim Musa	The Federal Polytechnic Damaturu, Nigeria
k15-104	Dian Indiyati	Jenderal Achmad Yani University
k15-141	Dwi Budi Santoso	University of Brawijaya
k15-133	Ehab Injadat	Universiti Sains Islam Malaysia
k15-026	Endang Raino Wirjono	Universitas Atma Jaya Yogyakarta
k15-103	Erinsakin Martins Ojo	Adeyemi College of Education
k15-050	Fitria Husnatarina	Palangka Raya University
k15-139	Goma Bedawi Ahmed	University Putra Malaysia
k15-040	Gurmeet Singh	N. R. Institute of Business Management
k15-005	Hafezali Iqbal Hussain	Universiti Kuala Lumpur Business School
k15-097	Heni Nurani Hartikayanti	Jenderal Achmad Yani University
k15-129, 123 & 124	JiHyun Oh	Sookmyung Women's University
k15-123, 124, & 129	JiHyun Shim	Sookmyung Women's University
k15-092	John Hu	Chung Yuan Christian University
k15-071	Jue Xin Tan	Universiti Putra Malaysia
k15-007	Karl Wagner	Universiti Kuala Lumpur Business School
k15-137	Kartina Sury	Bina Nusantara University
k15-039	Kausar Saeed	Institute of Business Management
k15-011	Khalid Kiswani	Gulf University for Science and Technology
k15-096	Leila C. Kabigting	University of Guam
k15-050	Leliana Maria Angela	Palangka Raya University
k15-045	Lucie Rudolfova	University of Economy Prague
k15-083	M.Umar Burhan	University of Brawijaya
k15-062	Marta Borda	Wroclaw University of Economics, Poland
k15-114	Masaki Yamaguchi	Yamagata University, Japan
k15-086	Megumi Suto	Waseda University
k15-099	Minrohayati	Universitas Terbuka
k15-081	Modar Abdullatif	Princess Sumaya University for Technology
k15-132	Mohammad Haider	Kwansei Gakuin University
k15-091	Mohammed AlRashidi	College of Technological Studies (PAAET)
k15-002	Mohd Farid Shamsudin	Universiti Kuala Lumpur Business School
k15-017	Nam Foo	Curtin University
-	Noboru Nagaoka	Yamagata University, Japan
k15-001, 004	Noor ul Hadi	Universiti Kuala Lumpur Business School
k15-018	Nung Harjanto	Akademi Akuntansi YKPN

-	Paritosh Ghosh	Red Deer College, Canada
k15-027	Sabreena Zoha Amin	University of Western Sydney
k15-030	Sang Ayu Putu Piastini Gunaasih	Atma Jaya Yogyakarta University
k15-075	Sean McGovern	Setsunan University, Japan
k15-003, 004	Shehnaz Tehseen	Universiti Kuala Lumpur Business School
k15-006	Sheikh Muhamad Hizam B. Hj. Sh. Khairuddin	Universiti Kuala Lumpur Business School
k15-037	Shiaw Jia Eyo	Hosei University
k15-003, 004	Sulaiman Sajilan	Universiti Kuala Lumpur Business School
k15-051	Sulieman Ibraheem Shelash Al-hawary	Al al-Bayt University
k15-076	Sultan Rehman Sherief	Management and Science University
k15-140	Syafrilenti	University of Brawijaya
k15-045	Tatiana Skerlikova	University of Economy Prague
k15-105	V. Santi Paramita	Universitas Jenderal Achmad Yani
k15-077	Vijayesh Kumar	University of Buraimi, Oman
k15-057	Xiang Zou	University of Malaya
k15-018	Yavida Nurim	Universitas Janabadra
k15-094	Zaidirina	Universitas Lampung